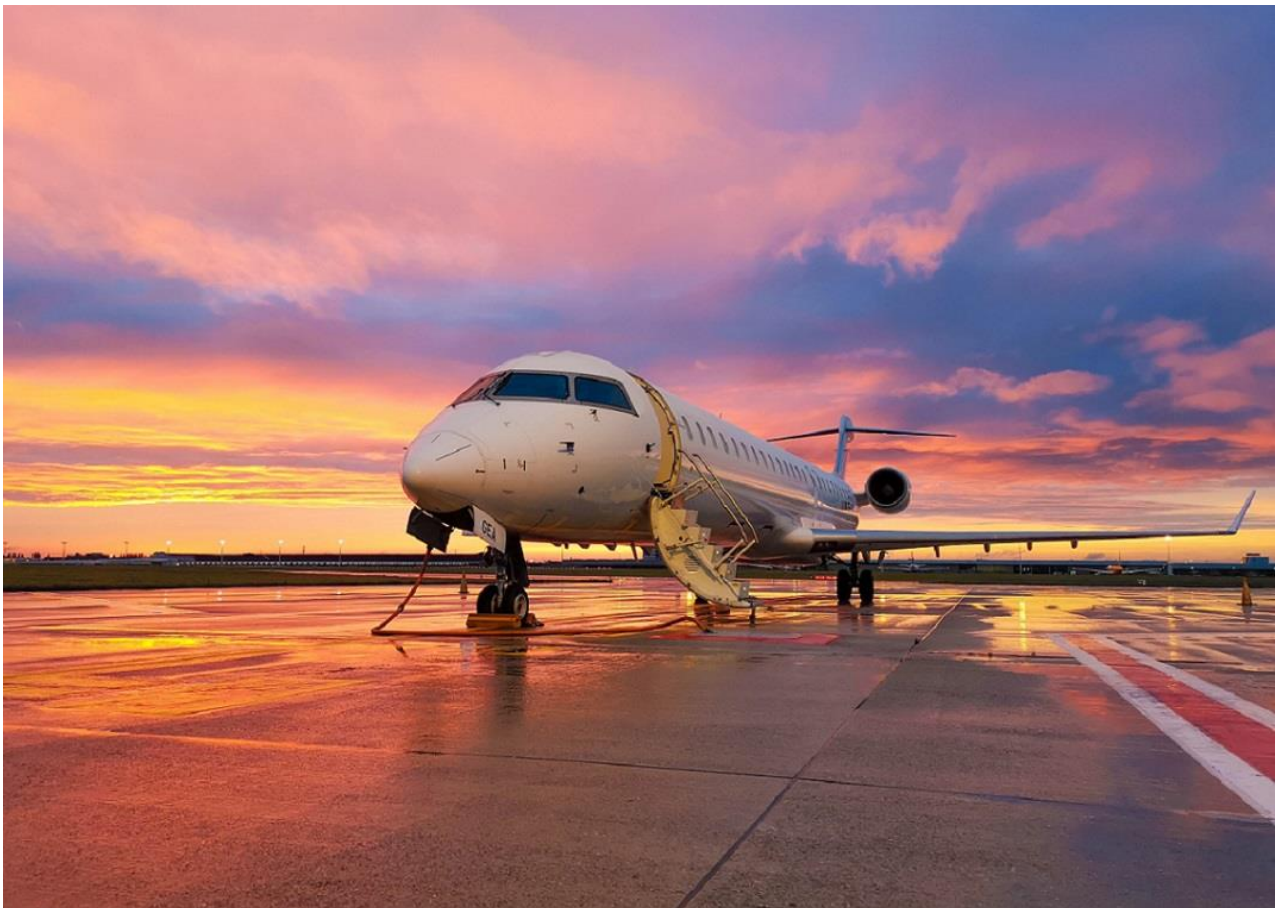

CITYJET

Mitsubishi CRJ-900LR (88/90Y)

Aircraft Detail



Member Airline of



July 2022

CRJ900 Aircraft Data



Manufacturer	Mitsubishi (formerly Bombardier)
Type	CRJ900
Series	CL-600-2D24
Type Certificate	Transport Canada A-276, EASA Data Sheet No. IM.A.023
Engines	2 x General Electric CF34-8C5
APU	Allied Signal RE-220 RJ

Maximum Ramp Weight	38,222 kg
Maximum Take-off Weight	37,995 kg
Maximum Landing Weight	34,065 kg
Maximum Zero Fuel Weight	32,092 kg

Noise Certification Standard	ICAO Chapter 4
Lateral/Full Power Noise Level	89.1 EPNdB
Approach Noise Level	92.4 EPNdB
Flyover Noise Level	83.6 EPNdB

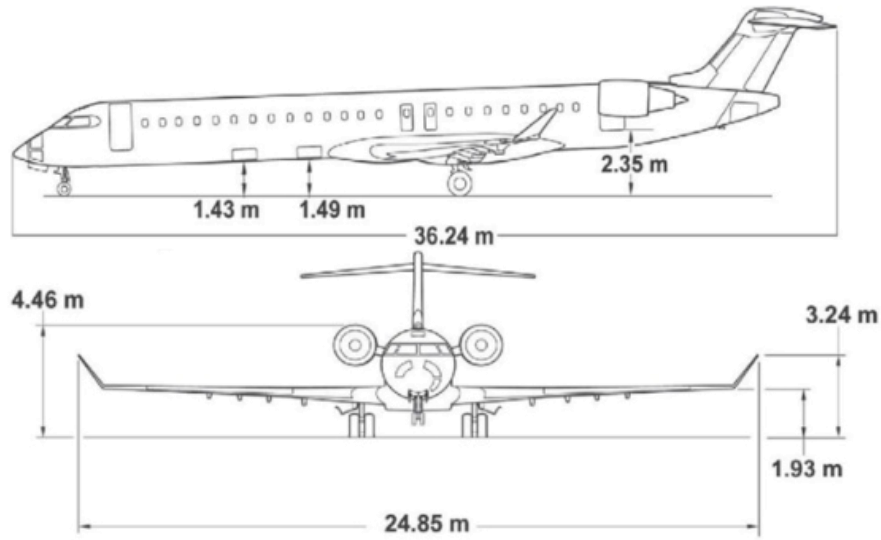
Maximum Cruise	0.85 Mach
Range (Max Payload)	1,140nm*
T/O Field Length (MTOW)	2,090m
Landing Field Length (MLW)	1,704m
Aircraft Ceiling	41,000ft
ICAO Class	C

*Assumptions: ISA conditions; 100nm alternate; 30min holding @diversion altitude; pax@97kg

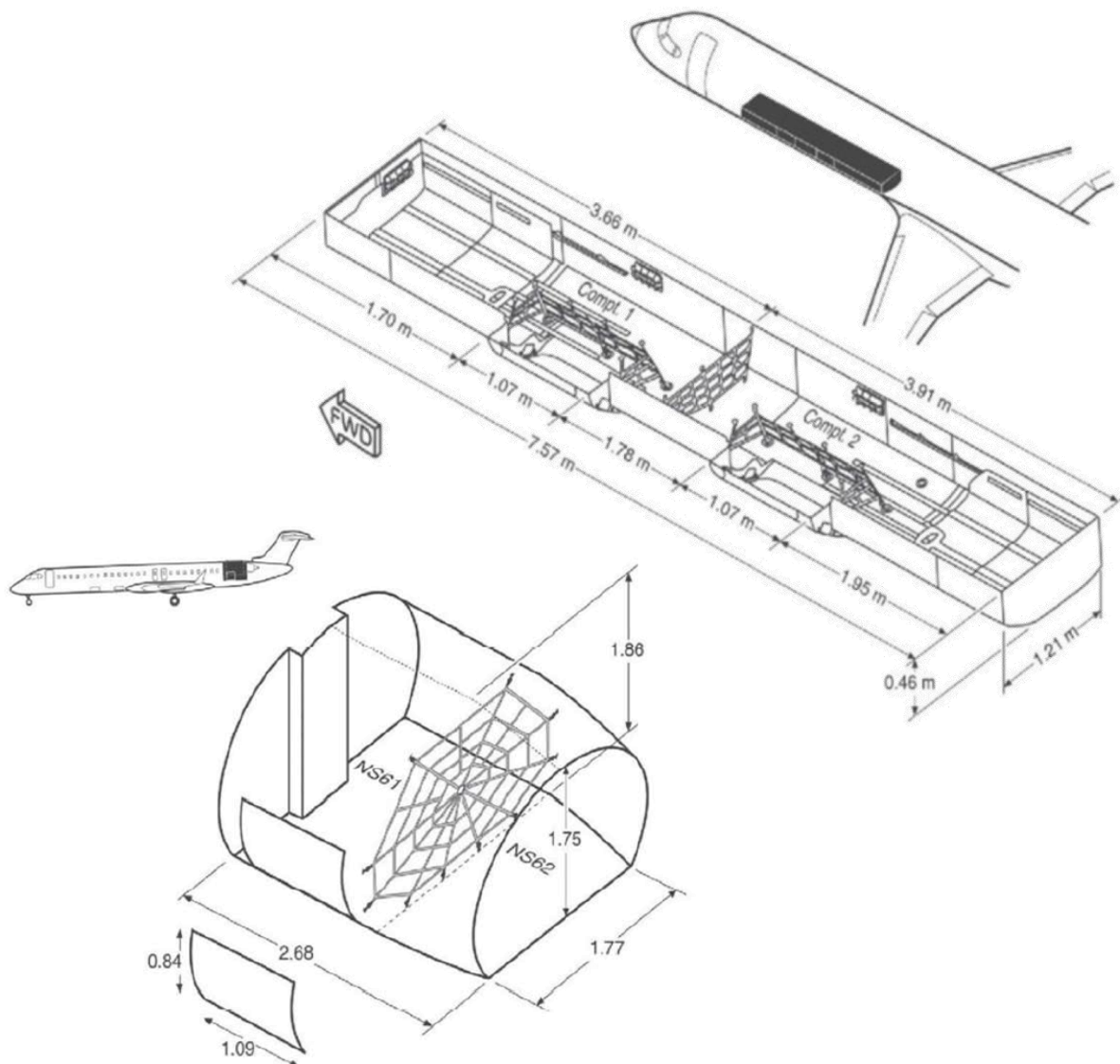
Capabilities	
Approach	CAT II (DH 100ft / RVR 350m)
Low Visibility Take Off/LVTO	RVR 125m
RVSM	Yes
PRNAV	Yes
ACARS	Yes
Dangerous Goods	Yes
AVIH	Yes

CityJet Approvals	
IATA IOSA	
Lufthansa Group Common Airline Risk Assessment (CARA)	
UK Third Country Operator (TCO)	

Dimensions and Baggage



Hold	Max. Gross Weight [kg]	Maximum Volume [m ³]
1	385 kg	2.2 m ³
2	385 kg	2.2 m ³
6	1,496 kg	9.3 m ³



Configuration - CRJ900 - 88Y

Capacity: 88 passenger seats

Seat Row Labelling: AC DF

Cabin Attendant Seats: 2 (1 located in the forward cabin Entrance Compartment & 1 located on the aft cabin bulkhead).

Airstairs: 1 located at the forward left passenger door.

Emergency Exit seats: 16AC, 16DF, 17AC, 17DF. No SCPs to be seated in these seats.

Wheelchair passengers: Not to be seated in 1C, 2C or emergency exit seats.

Infants: Maximum of 8. Not to be seated in emergency exit seats. Can be seated on left & right side of cabin, window seat, as 3 drop down oxygen masks fitted above every double seat.

Unaccompanied Minors: Maximum of 6. Not to be seated in 1C, 2C or emergency exit seats.

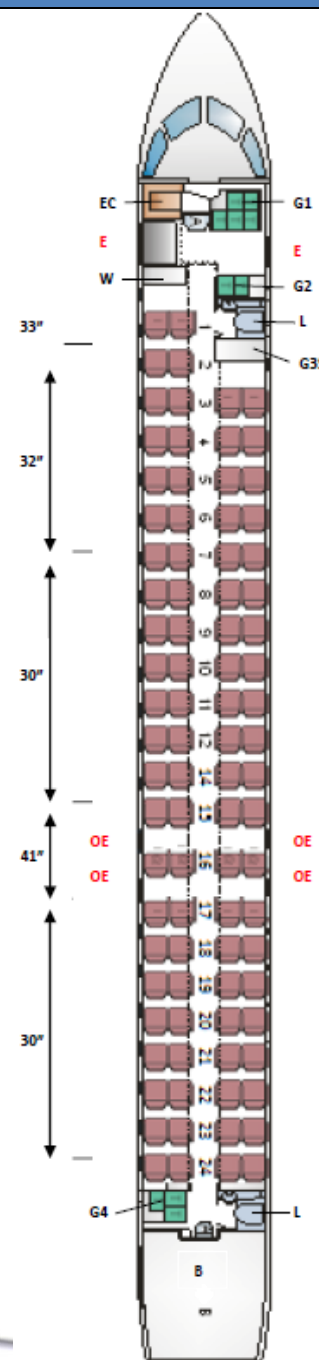
Pet in cabin: Cats & Dogs permitted. Not to be seated in row 1AC, 3DF or emergency exit seats.

Car seats: Permitted for infants up to 2 years old. Forward facing car seats only & must be secured using the passenger seat belt. Window seat only but not 1AC, 3DF or emergency exit seats.

Baby Changing Tables: 1 in forward & 1 in aft lavatory.

Drop Down Oxygen Masks: 2 in each lavatory, 2 above each cabin attendant seat, 3 above every double passenger seat.

Ovens : Galley G1 is equipped with two hot ovens with a capacity of 32 meals each



Y88	Half Cart (Atlas)	Container (Atlas)	Water Boiler (Inventum)	Oven (Tia 32 Meal)
G1	5			2
G2	2	3	2	
G3				
G4	3	2		
	10	5	2	2



Legend	
A	Attendant Seat
B	Baggage Compartment
D	Doghouse
E	Exit
EC	Entrance Compartment
G	Galley
I	With in-arm Table
L	Lavatory
OE	Overwing Exit
S	Storage
T	Half Size Trolley
US	Underbin Storage
UW	Underbin Wardrobe
W	Wardrobe
#	Inflatable Restraint System Required
@	No Recline

Configuration - CRJ900 - 90Y

Capacity: 90 passenger seats

Seat Row Labelling: AC DF

Cabin Attendant Seats: 2 (1 located in the forward cabin Entrance Compartment & 1 located on the aft cabin bulkhead).

Airstairs: 1 located at the forward left passenger door.

Emergency Exit seats: 16AC, 16DF, 17AC, 17DF. No SCPs to be seated in these seats.

Wheelchair passengers: Not to be seated in 1C or emergency exit seats.

Infants: Maximum of 8. Not to be seated in emergency exit seats. Can be seated on left & right side of cabin, window seat, as 3 drop down oxygen masks fitted above every double seat.

Unaccompanied Minors: Maximum of 6. Not to be seated in 1C or emergency exit seats.

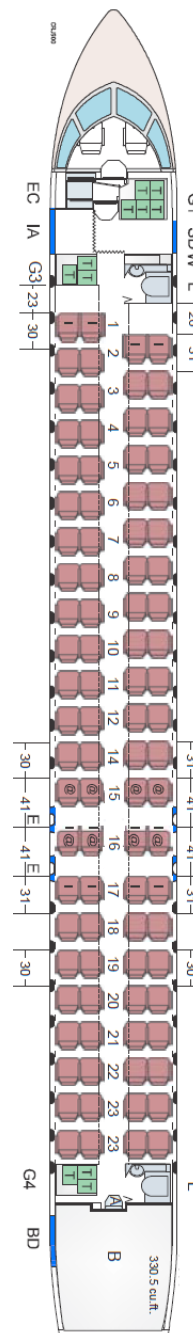
Pet in cabin: Cats & Dogs permitted. Not to be seated in row 1AC, 2DF or emergency exit seats.

Car seats: Permitted for infants up to 2 years old. Forward facing car seats only & must be secured using the passenger seat belt. Window seat only but not 1AC, 2DF or emergency exit seats.

Baby Changing Tables: 1 in forward & 1 in aft lavatory.

Drop Down Oxygen Masks: 2 in each lavatory, 2 above each cabin attendant seat, 3 above every double passenger seat.

Ovens : Galley G1 is equipped with hot oven with a capacity of 32 meals.



Y90	Half Cart (Atlas)	Container (Atlas)	Water Boiler (Inventum)	Oven (Tia 32 Meal)
G1	5		2	1
G2				
G3	3	3		
G4	3	2		
	11	5	2	1



Legend	
A	Attendant Seat
B	Baggage Compartment
D	Doghouse
E	Exit
EC	Entrance Compartment
G	Galley
I	With in-arm Table
L	Lavatory
OE	Overwing Exit
S	Storage
T	Half Size Trolley
US	Underbin Storage
UW	Underbin Wardrobe
W	Wardrobe
#	Inflatable Restraint System
	Required
@	No Recline

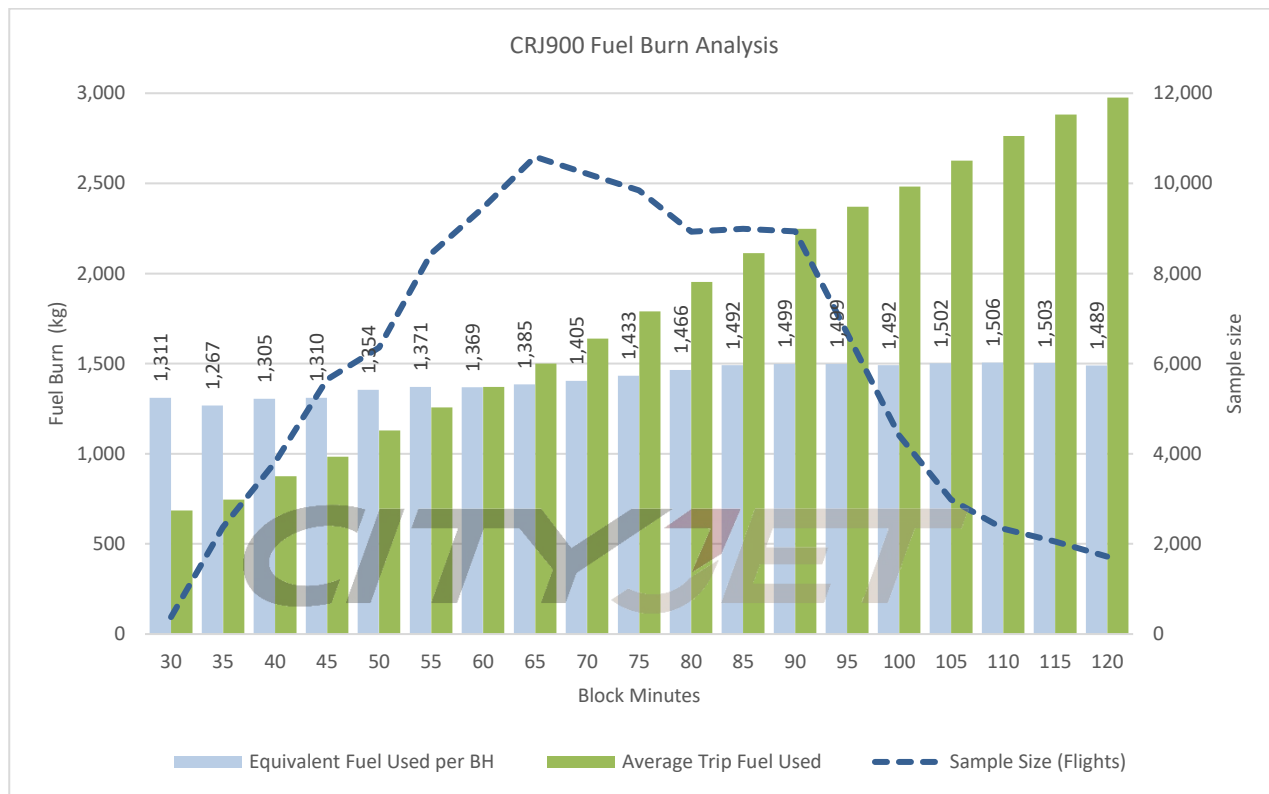
CRJ900 Fuel Performance

The following illustrates the achieved fuel performance for a sample of over 100,000 “real world” CityJet flights from 2019 to 2022.

Data fields are as follows:

- Average Trip Fuel Used : Average total fuel burn for flights of the relevant number of block minutes
- Equivalent Fuel Used per BH : The Average Trip Fuel expressed as an average burn per block hour
- Sample Size : Number of actual flights used in deriving the above data

Note : Data is rounded to the nearest five minute interval



Indicative Sample Range Circle (full payload)



*Assumptions: ISA conditions; 100nm alternate; 30min holding @diversion altitude; pax@97kg

CityJet Fleet Details

Registration	MSN	Date of Manufacture	Capacity	Current Livery
EI-FPB	15399	03/2016	Y90	White
EI-FPD	15401	04/2016	Y90	White
EI-FPE	15402	04/2016	Y90	White
EI-FPF	15426	12/2016	Y90	SAS
EI-FPG	15406	05/2016	Y90	SAS
EI-FPH	15409	06/2016	Y90	SAS
EI-FPI	15425	12/2016	Y90	White
EI-FPN	15433	06/2017	Y90	SAS
EI-FPP	15435	07/2017	Y90	SAS
EI-FPR	15436	08/2017	Y90	SAS
EI-FPS	15437	08/2017	Y90	SAS
EI-FPT	15438	10/2017	Y90	SAS
EI-FPU	15439	10/2017	Y90	SAS
EI-FPV	15440	11/2017	Y90	SAS
EI-FPW	15443	01/2018	Y90	SAS
EI-FPX	15444	02/2018	Y90	SAS
EI-GEA	15224	04/2009	Y88	White
EI-GEB	15231	04/2009	Y88	White
EI-GEC	15246	10/2009	Y88	White
EI-GED	15240	07/2009	Y88	White
EI-GEF	15244	08/2009	Y88	SAS
EI-GEH	15221	03/2009	Y88	White



For more details, contact acmirequests@cityjet.com